

Scan Anytime  
Anywhere



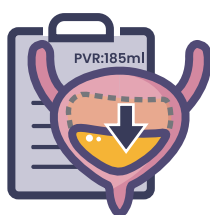
**CUBESCAN™**

**BioCon-900**

# Why Bladder Scanner?

A bladder scanner is a portable ultrasound device performing a quick, easy and non-invasive scan of the bladder. It can improve efficiency, reduce costs, and save time through the following use.

- **Non-invasive portable tool for managing and treating urinary outflow dysfunction**

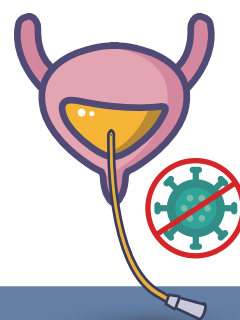


- Measurements for post void residual (PVR) and/or bladder volume
- Monitoring post-operative urinary retention (POUR)
- Evaluation of many common urological concerns (LUTS: Lower Urinary Tract Symptoms)

- **Reduction of unnecessary urinary catheter placement**



- Decision support for timely intermittent catheterization
- Reduction in catheter associated urinary tract infection (CAUTI) rates
- Improvement of the quality and safety of patient care



## **CAUTI (Catheter-Associated Urinary Tract Infection) Prevention**

UTI is the most common type of HAI (Healthcare Associated Infection) and most of UTIs obtained in the hospital are associated with a urinary catheter. That is why UTI (Urinary Tract Infection) is called catheter-associated urinary tract infection (CAUTI). Avoiding unnecessary urinary catheterization is the most effective way to prevent CAUTI.



## Portable probe

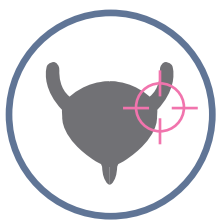
Experience the portable scanner to make your efficient workflow beyond the limits of time and place.



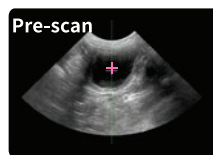
## Data management

BioCon-900 with the encrypted system and barcode reader enables more effective data management of medical records and patient information.

- Cybersecurity
- Barcode reader and image capture



## Key strength of CUBEScan™



- Pre-scan  
: A live view of the ultrasound image
- Bladder-Point™
- ACT™ (Auto-Construction Technology)
- Self-test
- Accuracy:  $\pm 15\%$  ( $\pm 15\text{ml}$ )

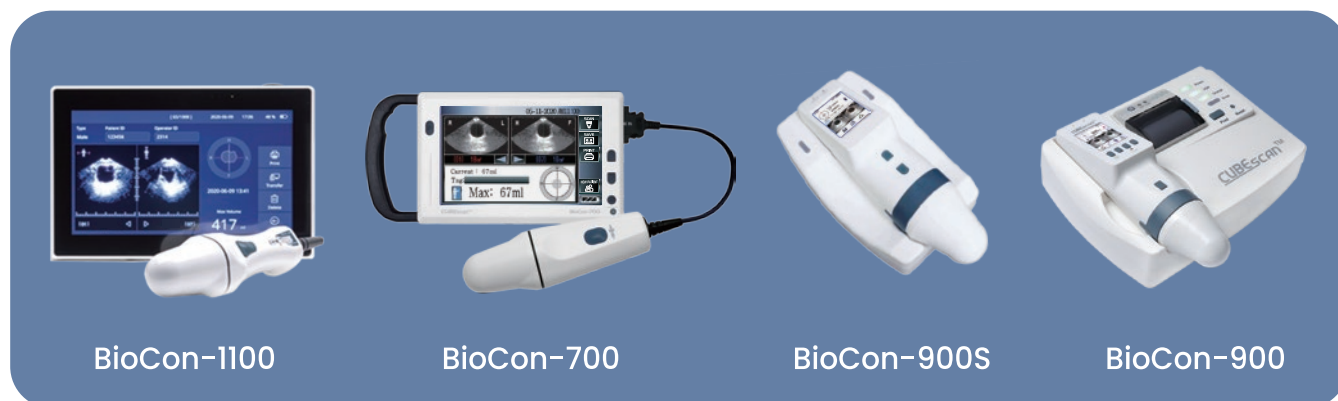


## Docking station

- Cordless charging
- Wireless data transmission
- Built-in printer

# CUBEScan™

Our bladder scanner, CUBEScan™ series, was started with the basic value of "SIMPLE, ACCURATE, DURABLE". Experience an optimized workflow beyond the limits of time and place.



## BioCon-900 Technical Specifications

Display	TFT-LCD 2.4 inch	External Interface	IrDA (Infrared Data Association)
Volume Range	0-999ml Accuracy : 0-99ml $\pm 15\text{ml}$ 100-999ml $\pm 15\%^*$	Patient ID input	1D/2D Barcode scan or Image capture
Scan Time	Approximately 2 seconds	Power	Rechargeable Li-ion battery Nominal voltage: 3.6V Nominal capacity: 5200mAh Charging time: less than 6 hours Approximately 1500 Scans available**
Ultrasound Probe	Dual frequency (2MHz, 3.4MHz) B-mode scan image Scan angle: $120^\circ$ Penetration depth : 23cm (Adult) : 8cm (Children)		

\* Based on the CUBEScan Phantom

\*\*For a new battery module fully charged, Tested on Mcube Technology's test conditions.



**Mcube**  
Mcube Technology Co., Ltd.

39, Magokjungang 12-ro, Gangseo-gu, Seoul, 07789, Republic of Korea

Tel: +82)2-3421-7780

Website: [www.mcubetech.co.kr](http://www.mcubetech.co.kr) E-mail: [mcube@mcubetech.co.kr](mailto:mcube@mcubetech.co.kr)

MCB-BioCon-900-EN (Rev.1.2)